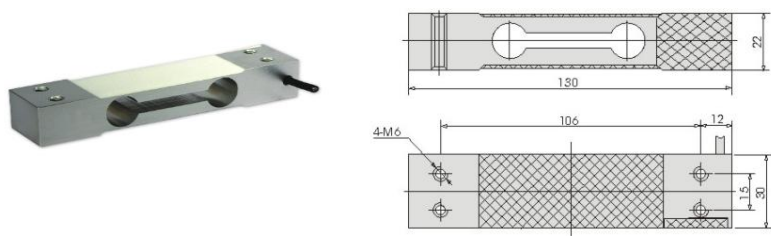


Model: CHL-601
Material: Aluminum-alloy

Use for: Electronic counting scale, platform scale.
Range: 3, 5, 6, 10, 15, 20, 30, 40, 50, 60, 100, 120 KG



Model: CHL601S Size: 110×22×30mm



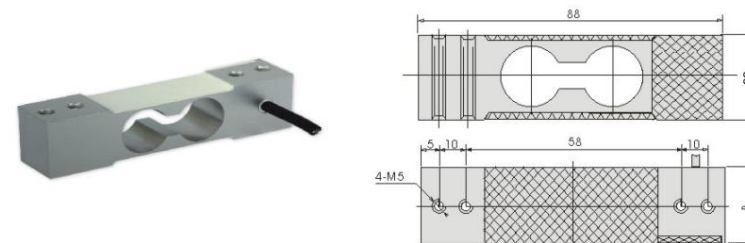
Recommended platform size: 250×350mm

Technical parameters

Comprehensive error	0.017&0.02%F.S	Output resistance	350±3Ω
Rated output	2±0.1mV/V	Insulation resistance	≥5000MΩ(100V DC)
Non-linearity	0.017&0.02%F.S	Excitation voltage	9~12V DC
Hysteresis	0.02%F.S	Compensated temp	-10~40℃
Repeatability	0.01&0.02%F.S	Use temp.	-20~55℃
Creep	0.017%F.S/30min 0.03%F.S/10min	Temp effect on Zero	0.017&0.03%F.S/10℃
Zero balance	±1%F.S	Temp effect on span	0.014&0.02%F.S/10℃
Input resistance	405±10Ω	Defend grade	IP65
Safe load	120%	Ultimate overload	150%
Precision grade	C3		

Model: CHL-602
Material: Aluminum-alloy

Use for: portable scale, platform scale.
Range: 3, 5, 6, 10, 15, 20, 30, 40, 50, 60, 100KG



Dimensions

Scale(kg)	3	5	6	10	15	20	25	30	40	50	60	100
B	20			30						40		

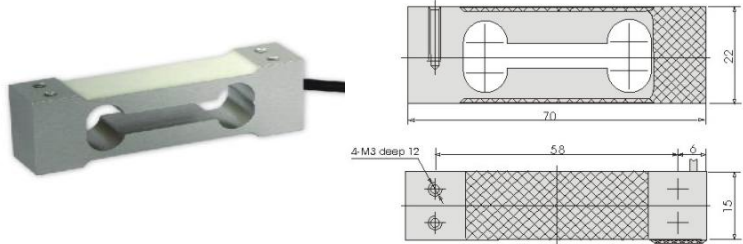
Model: CHL-602A Size: 100×30×22mm



Comprehensive error	0.03%F.S	Output resistance	350±3Ω
Rated output	2±0.02mV/V	Insulation resistance	≥5000MΩ(100V DC)
Non-linearity	0.03%F.S	Excitation voltage	9~12V DC
Hysteresis	0.03%F.S	Compensated temp	-10~40℃
Repeatability	0.02%F.S	Use temp.	-20~55℃
Creep	0.03%F.S/10min	Temp effect on Zero	0.03%F.S/10℃
Zero balance	±1%F.S	Temp effect on span	0.03%F.S/10℃
Input resistance	350±5Ω	Defend grade	IP66
Safe load	120%	Ultimate overload	150%
Precision grade	C2		

Model: CHL-608
Material: Aluminum-alloy

Use for: Electronic counting scale, platform scale.
Range: 0.5, 1, 3, 5, 6, 10, 15, 20, 25KG



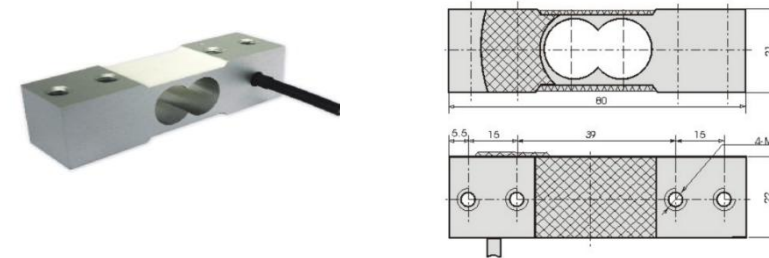
Recommended platform size: 200×200mm

Technical parameters

Comprehensive error	0.02%F.S	Output resistance	350±3Ω
Rated output	1±0.1mV/V &2±0.1mV/V	Insulation resistance	≥5000MΩ(100V DC)
Non-linearity	0.02%F.S	Excitation voltage	9~12V DC
Hysteresis	0.02%F.S	Compensated temp	-10~40℃
Repeatability	0.02%F.S	Use temp.	-20~60℃
Creep	0.02%F.S/10min	Temp effect on Zero	0.03%F.S/10℃
Zero balance	±1%F.S	Temp effect on span	0.02%F.S/10℃
Input resistance	405±10Ω	Defend grade	IP65
Safe load	120%	Ultimate overload	150%
Precision Grade	C2		

Model: CHL-618
Material: Aluminum-alloy

Use for: Electronic counting scale, platform scale.
Range: 5, 8, 10, 15, 20, 30, 35, 100KG



Model: CHL-618D
Scale: 5~40KG

Size: 52×20×18mm
Precision grade: C1

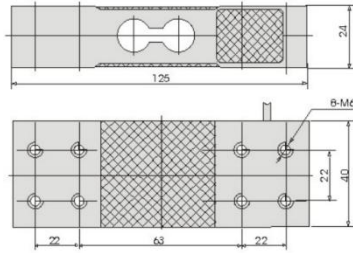
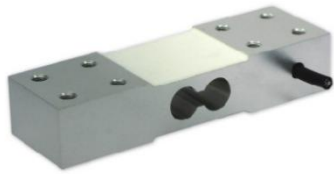


Technical parameters

Comprehensive error	0.02%F.S	Output resistance	1000±5Ω
Rated output	1.5±0.1mV/V	Insulation resistance	≥5000MΩ(100V DC)
Non-linearity	0.02%F.S	Excitation voltage	9~12V DC
Hysteresis	0.02%F.S	Compensated temp	-10~40℃
Repeatability	0.02%F.S	Use temp.	-35~65℃
Creep	0.02%F.S/10min	Temp effect on Zero	0.03%F.S/10℃
Zero balance	±1%F.S	Temp effect on span	0.02%F.S/10℃
Input resistance	1090±10Ω	Defend grade	IP65
Safe load	120%	Ultimate overload	150%
Precision Grade	C2		

Model: CHL-619
Material: Aluminum-alloy

Use for: Electronic counting scale, platform scale.
Range: 20, 30, 50, 60, 100, 150, 200, 250, 300KG



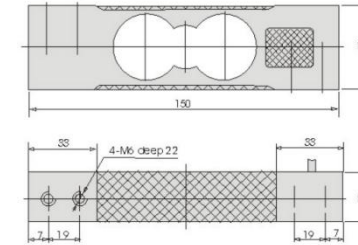
Recommended platform size: 350×400mm

Technical parameters

Comprehensive error	0.02%F.S	Output resistance	350±3Ω
Rated output	2±0.1mV/V	Insulation resistance	≥5000MΩ(100V DC)
Non-linearity	0.02%F.S	Excitation voltage	9~12V DC
Hysteresis	0.02%F.S	Compensated temp	-10~40℃
Repeatability	0.02%F.S	Use temp.	-20~60℃
Creep	0.02%F.S/10min	Temp effect on Zero	0.03%F.S/10℃
Zero balance	±1%F.S	Temp effect on span	0.02%F.S/10℃
Input resistance	405±10Ω	Defend grade	IP65
Safe load	120%	Ultimate overload	150%
Precision Grade	C2		

Model: CHL-623
Material: Aluminum-alloy

Use for: Electronic counting scale, platform scale.
Range: 5, 10, 20, 50, 60, 75, 100, 120, 150, 200KG



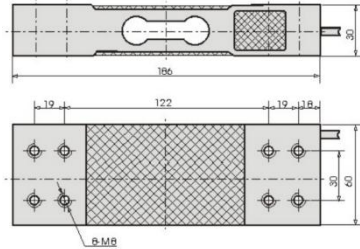
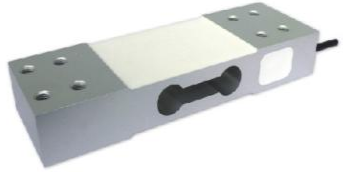
Recommended platform size: 350×400mm

Technical parameters

Comprehensive error	0.017&0.02%F.S	Output resistance	350±5Ω
Rated output	1±0.1&2±0.1mV/V	Insulation resistance	≥5000MΩ(100V DC)
Non-linearity	0.017&0.02%F.S	Excitation voltage	9~12V DC
Hysteresis	0.017&0.02%F.S	Compensated temp	-10~40℃
Repeatability	0.01&0.02%F.S	Use temp.	-20~60℃
Creep	0.017%F.S/30min &0.02%F.S/10min	Temp effect on Zero	0.017&0.03%F.S/10℃
Zero balance	±1%F.S	Temp effect on span	0.014& 0.02%F.S/10℃
Input resistance	405±10Ω	Defend grade	IP65
Safe load	120%	Ultimate overload	150%
Precision Grade	C3		

Model: CHL-628
Material: Aluminum-alloy

Use for: Electronic counting scale, platform scale.
Range: 50, 60, 75, 100, 150, 200, 300, 500, 600, 750KG



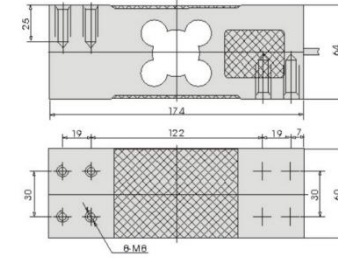
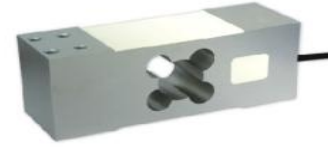
Recommended platform size: 600×600mm

Technical parameters

Comprehensive error	0.017&0.02%F.S	Output resistance	350±3Ω
Rated output	2±0.1mV/V	Insulation resistance	≥5000MΩ(100V DC)
Non-linearity	0.017&0.02%F.S	Excitation voltage	9~12V DC
Hysteresis	0.017&0.02%F.S	Compensated temp	-10~40℃
Repeatability	0.01&0.02%F.S	Use temp.	-20~60℃
Creep	0.017%F.S/30min &0.02%F.S/10min	Temp effect on Zero	0.017&0.03%F.S/10℃
Zero balance	±1%F.S	Temp effect on span	0.014&0.02%F.S/10℃
Input resistance	405±10Ω	Defend grade	IP65
Safe load	120%	Ultimate overload	150%
Precision Grade	C3		

Model: CHL-629
Material: Aluminum-alloy

Use for: Electronic counting scale, platform scale.
Range:50, 100, 150, 200,300, 350, 500, 1000KG



Recommended platform size:600×600mm

Technical parameters

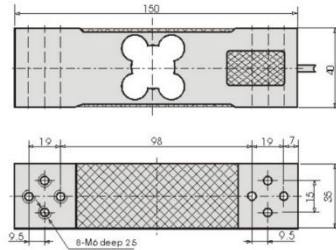
Comprehensive error	0.017&0.02%F.S	Output resistance	350±5Ω
Rated output	2±0.1mV/V	Insulation resistance	≥5000MΩ(100V DC)
Non-linearity	0.017&0.02%F.S	Excitation voltage	9~12V DC
Hysteresis	0.017&0.02%F.S	Compensated temp	-10~40℃
Repeatability	0.01&0.02%F.S	Use temp.	-20~60℃
Creep	0.017%F.S/30min &0.02%F.S/10min	Temp effect on Zero	0.017&0.03%F.S/10℃
Zero balance	±2%F.S	Temp effect on span	0.014& 0.02%F.S/10℃
Input resistance	405±10Ω	Defend grade	IP65
Safe load	120%	Ultimate overload	150%
Precision Grade	C3		

Model: CHL-638

Use for: Electronic counting scale, platform scale.

Material: Aluminum-alloy

Range: 30, 50, 60, 100, 150, 200, 250, 300, 500KG



Recommended platform size: 400×400mm

Technical parameters

Comprehensive error	0.017&0.02%F.S	Output resistance	350±3Ω
Rated output	1±0.1mV/V& 2±0.1mV/V	Insulation resistance	≥5000MΩ(100V DC)
Non-linearity	0.017&0.02%F.S	Excitation voltage	9~12V DC
Hysteresis	0.017&0.02%F.S	Compensated temp	-10~40℃
Repeatability	0.01&0.02%F.S	Use temp.	-20~60℃
Creep	0.017%F.S/30min &0.02%F.S/10min	Temp effect on Zero	0.017&0.03%F.S/10℃
Zero balance	±1%F.S	Temp effect on span	0.014&0.02%F.S/10℃
Input resistance	405±10Ω	Defend grade	IP65
Safe load	120%	Ultimate overload	150%
Precision Grade	C3		

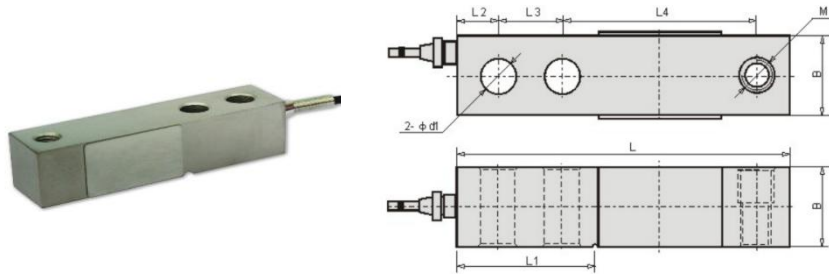
Load cell Shearing Beam type CHL8

Model: CHL-803

Material: Alloy-steel/SSL

Use for: Electronic counting scale, vehicle scale. Railway scale

Range: 1.5~4, 5~15Klb, 0.5~2, 2.5~5, 10T



scale	L	L1	L2	L3	L4	D	B	M
1.5~4Klb/ 0.5~2T	130	56.5	15.8	25.4	76.2	13.5	31.8	M12×1.75
5~15Klb/ 2.5~5T	171.5	77.2	19.1	38.1	95.3	20	38.1	M18×1.5
20Klb/10T	222.3	101.6	25.4	50.8	120.7	26.2	50.8	M24×2

Technical parameters

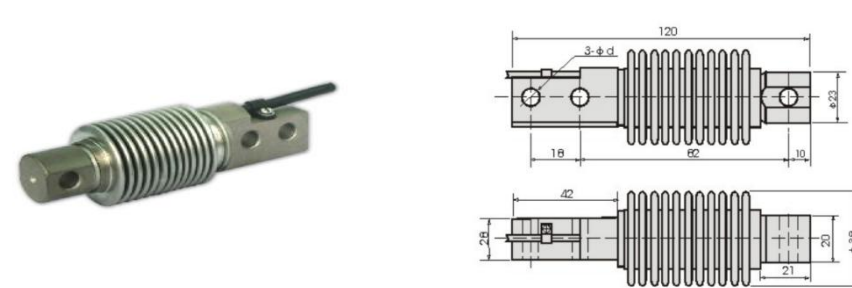
Comprehensive error	0.02%F.S	Output resistance	350±3Ω
Rated output	3±0.003mV/V	Insulation resistance	≥5000MΩ(100V DC)
Non-linearity	0.03%F.S	Excitation voltage	9~12V DC
Hysteresis	0.03%F.S	Compensated temp	-10~40℃
Repeatability	0.02%F.S	Use temp.	-20~55℃
Creep	0.02%F.S/10min	Temp effect on Zero	0.03%F.S/10℃
Zero balance	±1%F.S	Temp effect on span	0.02%F.S/10℃
Input resistance	350±5Ω	Defend grade	IP66
Safe load	120%	Ultimate overload	150%
Precision Grade	C3		

Model: CHL-810

Material: Alloy-steel/SSL

Use for: platform scale, hopper scale.

Range: 10, 20, 30, 50, 100, 200, 300, 350, 500KG



scale	10~200	250~500
d	8.2	10.3

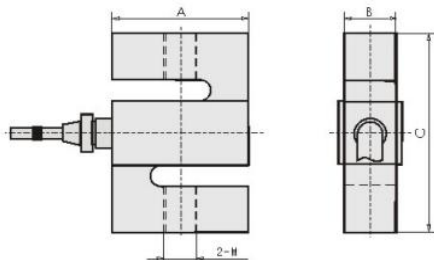
Technical parameters

Comprehensive error	0.02%F.S	Output resistance	350±3Ω
Rated output	2±0.002mV/V	Insulation resistance	≥5000MΩ(100V DC)
Non-linearity	0.017%F.S	Excitation voltage	9~12V DC
Hysteresis	0.02%F.S	Compensated temp	-10~40℃
Repeatability	0.01%F.S	Use temp.	-20~55℃
Creep	0.02%F.S/10min	Temp effect on Zero	0.02%F.S/10℃
Zero balance	±1%F.S	Temp effect on span	0.014%F.S/10℃
Input resistance	350±5Ω	Defend grade	IP68
Safe load	150%	Ultimate overload	200%
Precision Grade	C3		

Load cell S type CHL3

Model: CHL-301
Material: Alloy steel

Use for: hanging scale, batching scale.
Range: 100, 200, 300, 500, 1000, 2000, 5000KG



Dimensions

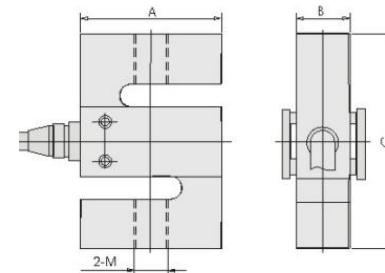
Model	Scale(kg)	A	B	C	M
301	10~50	50.8	12.7	64	M8
	100~500	50.8	19	76	M12×1.75
	750~1500	50.8	25.4	76	M12×1.75
	2000~5000	76.2	25.4	108	M18×1.5
301S	1000~3000	60	30	80	M16

Technical parameters

Comprehensive error	0.03%F.S	Output resistance	350±3Ω
Rated output	2±0.02mV/V	Insulation resistance	≥5000MΩ(100V DC)
Non-linearity	0.03%F.S	Excitation voltage	9~12V DC
Hysteresis	0.03%F.S	Compensated temp	-10~40℃
Repeatability	0.02%F.S	Use temp.	-20~55℃
Creep	0.03%F.S/10min	Temp effect on Zero	0.03%F.S/10℃
Zero balance	±1%F.S	Temp effect on span	0.03%F.S/10℃
Input resistance	350±5Ω	Defend grade	IP66
Safe load	150%	Ultimate overload	200%
Precision grade	C2		

Model: CHL-302
Material: Aluminum-alloy

Use for: portable scale, tension/compression application
Range: 1~5, 10~50, 100, 150~500KG



Dimensions

Scale(kg)	A	B	C	M
1~5	70	10	60	M6
10~50	50.8	12.7	63.5	M8
100	50.8	19.1	76.2	M12
150~500	64	23	82	M12

Technical parameters

Comprehensive error	0.03%F.S	Output resistance	350±3Ω
Rated output	2±0.02mV/V	Insulation resistance	≥5000MΩ(100V DC)
Non-linearity	0.03%F.S	Excitation voltage	9~12V DC
Hysteresis	0.03%F.S	Compensated temp	-10~40℃
Repeatability	0.02%F.S	Use temp.	-20~55℃
Creep	0.02%F.S/10min	Temp effect on Zero	0.03%F.S/10℃
Zero balance	±1%F.S	Temp effect on span	0.03%F.S/10℃
Input resistance	350±5Ω	Defend grade	IP66
Safe load	150%	Ultimate overload	200%
Precision grade	C2		