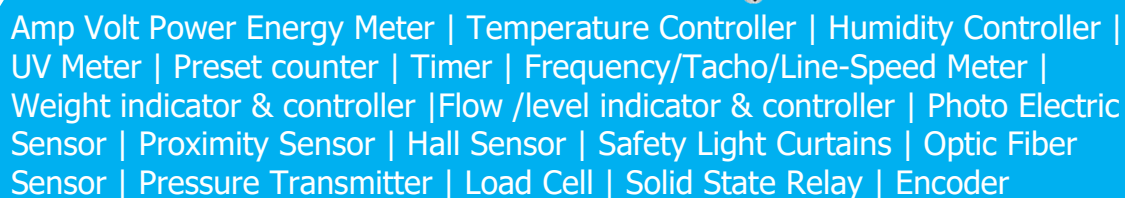


We make industrial automation control easier



COMPANY PROFILE

About us

Established in 2018, APOSUN is specialized in manufacturing and selling industrial automation instruments like temperature controllers, amp volt power energy meters, universal panel meters, UV meters, counter timer frequency meters, weight indicator & controller ,flow / level indicator & controller etc. If you like our products, welcome to contact us!

Production line

- Company profile -----P1
- Amp Volt Power Energy Meter -----P2
- Preset Counter | Timer | Frequency | Tacho | Line-Speed Meter -----P3
- UV Meters -----P4
- Temperature Indicator & Controller -----P5~P7
- Universal Inputs Panel Meters -----P8
- Weight/Force/Batching Controller -----P9
- Flow/Level Indicator & Controller -----P10
- Temperature & Humidity Controller -----P11
- Sensor (Proximity Switch, Photoelectric Sensor, Optical Fiber Sensor, Safety Light Curtain, Pressure Transducer, Load Cell) -----P12
- Solid State Relay & Rotary Encoder -----P13

Warranty

All the APOSUN brand products come with a manufacturer's 12-month warranty. If you encounter any problems with your product during this time period, simply return it to where it was purchased for a brand new replacement. If you cannot contact your retailer, then please email us at sale@aposunmeter.com for assistance.

Shipping

- By Sea
- By Air
- By Express(including DHL, TNT, FEDEX, UPS, EMS, arriving at your doorsteps within an average of 3-7 days.)

Our Values

- Professionalism
- Customer's satisfaction
- Good and prompt after-sale support

Ampere Voltage Power Energy



Product: 3 Phase LCD Multifunction Power Meter

Model: CHD9001

Feature: 96x96mm Monitor energy consumption, schedule time-of-use



Product: 3 Phase LCD Multifunction Power Meter

Model: CHD7002

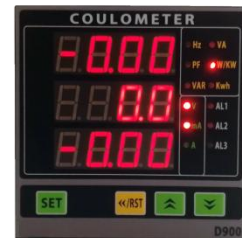
Feature: 72x72mm True RMS measurement & Multi-tariffs Cost-effective & Reduce



Product: 3 Phase LED Power Meter

Model: CHD9000

Feature: 96x96mm Ampere Volt Energy Power Monitor for AC/DC current, voltage, power, power factor, KWH, frequency...in 3-phase system



Product: Single Phase LED Power Meter

Model: CHD900

Feature: 96x96mm 4 buttons operation, user-friendly CT/PT input, True RMS measuring coulometer



Product: 3 Phase LED Ammeter/Voltage Meter

Model: CHDW93

Feature: 96x96mm 3 phase current/voltage monitoring in 3 windows at the same time, AC measurement, displaying function only



Product: Single Phase LED AC DC Amp/Volt Panel Meter

Model: CHDH8

Feature: 48x96mm Dual windows LED display any AC DC ampere/voltage with CT/PT, RMS measurement

10khz Preset Counter | Smart Digital Relay for time/count/hz



Product: 10k hz High Counting Speed | Preset Initial Value| Preset Counter | Batch Counter 48W*48H mm 6 digits!

Model: CHCV4

Feature: 6 digits programmable counter meter, prescale, key-lock, up to 10KHz response. analog output, relay alarm, RS485/RS232



Product: 10k hz High Counting Speed | Preset Initial value| Preset Counter | Batch Counter 48W*96H mm

Model: CHCV8/

Feature: 6 digits programmable counter meter, prescale, key-lock, up to 10KHz response. analog output, relay alarm, RS485/RS232



Product: 4/8 Digits Relay Counter | Timer | Frequency Meter All In One !!!

Model: CHCN48

Feature: SMALL BUT POWERFULL! 48x48x80mm Digital Relay All in one panel meter! Counter, timer & frequency combination. 4/8 digits display



HOT SALE! APOSUN provides on-line UV meter and UV lamp hour meter for measuring light sources found in common house & industrial Ultra Violet disinfection systems. Mainly deal with UV air purifier and UV water sterilizer, which makes our life healthy and safe.

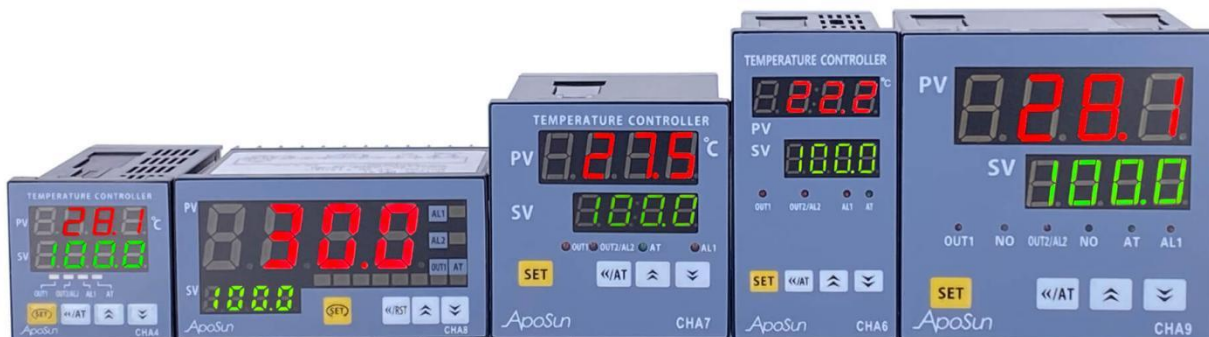


Product: **UV Light Intensity Meter With Detector**

Model: CHS4AM

Feature: 48×48mm size Accumulated timing for UV lamp running-time | UV irradiance low alarm | Running time alarm | UV sensor monitors UVC(273.5nm) | Measure range: 0~19999uW/ cm²

Temperature Indicator & Controller



Product: APOSUN Multiple PID Temp. Controller

Model: CHA4/CHA6/CHA7/CHA8/CHA9 series

APOSUN **Economic type** Multiple temperature sensor signals TC(K, J, E, S), PT100; Cu50, 4-20mA, 0-10V signal can be customized.

Max accuracy 0.3%F.S, sampling speed ≤ 300 ms.

Auto-tuning PID control, easy to operate. Special cold junction compensation makes the temperature reading more accurate.

6 alarm modes(high alarm, low alarm, absolute high alarm, absolute low alarm, interval alarm out of interval alarm) optional.

Be applicable with universal AC 85~256V or DC 24V power supply. And have a variety of dimensions for the customer to choose.



Product: **DIN Rail** Temperature Controller Mini size, Easy operation

Model: CHR-2000

Feature: 22.5x75x94.5mm | Universal input(TC/RTD/Voltage/Current) | PID and ON/OFF Control | Output:(Relay/SSR/Transmission/RS485)

LCD PID Temperature Controller



Product: **LCD PID Temperature** Controller

Model: E5 series

APOSUN **LCD PID** temperature sensor signals TC(K,E,J,N,S,T,R,B), PT100; 4-20mA, 0-10V signal can be customized. **RS485 optional**

Max accuracy 0.3%F.S, sampling speed $\leq 300\text{ms}$.

Auto-tuning PID control, easy to operate. Special cold junction compensation makes the temperature reading more accurate.

12 alarm modes(high alarm, low alarm, absolute high alarm, absolute low alarm, interval alarm out of interval alarm) optional.

Be applicable with universal AC 85~256V or DC 24V power supply. And have a variety of dimensions for the customer to choose.

Temperature & Time Controller



Product: PID **Temperature & Time** Controller

Model: CHCT series

Feature: Input((K, J, E, PT100)) | PID and ON/OFF Control | Self-adjusting | Build-in time trigger | Preset time range:0~999 s.m.h | Used for heat printer machine



Product: **Ramp & Soak** PID Temperature Controller RS485 or Transmission

Model: CHCDP series

Feature: Universal Input (TC/RTD/Voltage/Current) | PID and ON/OFF Control | Self-adjusting | 10 Segments program temperature & time

Universal Inputs Panel Meters



Product: **Universal Inputs** Panel Meter

Model: CHCD series

Feature: Input: TC (K, S, R, E, J, T, N) RTD (Cu50, Pt100) Analog signals (0-50mV, 10-50mV, 0-5V DC, 0-10V DC, 1-5V DC, 2-10V DC, 4-20mA, 0-20mA, 0-10mA) Rt: 0-80Ω/0-400Ω | PID and ON/OFF Control | Self-adjusting | Output(RS485/Analog output/relay/SSR)



Product: **Economic Universal Inputs** Panel Meter

Model: CHDS series

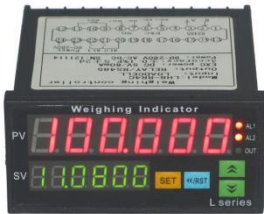
Feature: Input: (Current: 0-5A, 0-2A AC/DC , 0-1mA, 0-10mA, 4-20mA) ; (Voltage: 0-5V, 0-10V, 0-500V,0-10mV, ±100mV) ; (Rt: 0-400Ω, 0-10KΩ); (Cu50, Cu100) ; (PT100 TC: K, J, E, T, B, R, S) | Output:(RS485/Analog output/relay/SSR)

Weight/force/batching controller

Product: **high accuracy** weighing controller

Model: CHLH8 series

Feature:



1 High precision (0.02-0.05%F.S) Weight indicator and control

*Mixed Batching control

2 Direct Load :1-4 PCS load cells,24 bits A/D converter

3 Digital Input: START/STOP and Clear TARE (Reset)

4 UP to 6-Relay / SSR output: high / low alarm or fast / slow control

5 Transmit Output::4-20mA / 0-10V/0-5V

6 Data/Peak value holding function for choice.

7 communication :RS485 RS232 LAN RJ45(MODBUS-RTU) .

8 Other funtion can be customized

Product: **Economic type** weighing controller

Model: CHLM8 series

Feature:



1 precision (0.1%F.S±2digit) Weight measurement and control

*Mixed Batching control

2 Direct Load :1-4 PCS loadcells, 24 Bits A / D

3 Digital Input: Start / Stop and Clear Tare

4 Output::4-20mA / 0-10V , Relay / SSR / Logic output

5 Data Peak value holding function for choice.

6 Communication : RS485 RS232,RJ45(LAN)

MODBUS-RTU protocol.

Flow / Level Indicator & Controller

Product: **Flow / Level Indicator & Controller**

Model: CHLF8 series

Feature:



- * The Meter can measure various media flows such as liquid, gas, saturated steam etc.
- * it has multi-arithmic method to automatically compensate for the flow density
- * Multi- displays : Total cumulative flow ,current cumulative flow, current flow etc.
- * Can be use with 2 wiring transmitter, pressure sensor ,level sensor rotor flow sensor etc.
- * RS232/RS485 RJ45 MODBUS-RTU protocol

Temperature & Humidity Controller



APOSUN **temperature & humidity controller** is widely used in Breeding/Planting industry (such as green housing, fishing/turtle raising, egg incubator), warehousing/storage equipment (such as shipping warehouse, medical cabinet, commodity storage), dryer, or other temp & humidity monitoring system.



Product: Temperature & Humidity Controller With Sensor

Model: CHCRH400+SHT10

Feature: 48x96mm | Temperature Units: Degree Celsius (-20 ~ 100°C) |
Humidity Measuring Range: 10% ~ 90%RH | 4 control modes |
ON/OFF switch control



Product: Proximity Sensor

Model: CHIPS/CPS

Feature: Metal detect
inductive/capative
proximity switch
sensor, sensing
distance 5mm.



Product: Proximity Sensor

Model: SN04-N1

Feature: Small rectangular
inductive sensor
switch, sensing
distance 5mm.



Product: Proximity Sensor

Model: Q5MC1

Feature: Square
rectangular
inductive
proximity sensor
NPN PNP type,
sensing distance



Product: Fiber Optic Sensor

Model: CHA4R-N

Feature: High-speed
photoelectric
sensor, one-
button setting,
easy for
operation.



Product: Diffuse Reflective
Photo Sensor

Model: CHPES-D

Feature: Cylinder
M12/M18/M30
type, long
detecting distance:
10cm,
30cm,1m.operation



Product: Retro Reflective
Photo Sensor

Model: CHPES-R

Feature: Cylinder M18/M30
type. Long
detecting distance:
3m/4m.
Cable/Plug-in
connection.



Product: Through Beam Photo
Switch

Model: CHPES-T

Feature: Square rectangular
inductive proximity
sensor NPN PNP type,
sensing distance
5mm.operation.



Product: Safety Light
Curtains Barriers

Model: QA06/10-50AA

Feature: NPN/PNP output
Protect finger
sensor / Infrared
safety light curtain



Product: S type Weighing Load
Cell

Model: CHL-301

Feature:100kg, 200kg, 300kg,
500kg, 2000kg,
5000kg range,
0.03%F.S accuracy.

Solid State Relay & Rotary Encoder



Product: Single Phase Solid State Relay

Model: CHDH

Feature: SSR, solid-state switch,
10/20/25/30/50/60/80/100/120A Load LED Indicator



Product: Three Phase Solid State Switch

Model: CHTH

Feature: AC to DC SSR, AC to AC SSR, DC to AC SSR, DC to DC SSR.
3-32Vdc, 70-280Vac



Product: Incremental Rotary Encoder

Model: CHT

Feature: Diameter 38/50/58/70mm,
Solid shaft 6/8/10mm,
100/200/500/1000/2000ppr.



Product: Wheel Encoder Sensor ---Length Sensor

Model: CHLK-80/CHLK-70/CHLK-90

Feature: Dual direction pulse counting, min counting 0.001/0.01/0.1m.
work with our counters.



NEW PRODUCTS COMING SOON!

CONTACT INFO

Room 4, 2nd Fl., Liu commercial building, Donghai 1ST Rd,
Dongfeng Town, Zhongshan, Guangdong, China

Phone: 86-760-87865994

Mobile: 86-13217608016

Fax: 86-760-87865994

Email: sale@aposunmeter.com

Web: www.aposunmeter.com